

## Traffic advisor serie C4

### POWER WIRING

**RED:** to +VDC (with fuse according to the following chart)

LIGHTHEAD TYPE	2 HEADS	4 HEADS	6 HEADS	8 HEADS	10 HEADS
3-LED Lighthead	3 Amps	3 Amps	5 Amps	5 Amps	10 Amps
4-LED Lighthead	3 Amps	5 Amps	5 Amps	10 Amps	10 Amps
6-LED Lighthead	3 Amps	5 Amps	10 Amps	10 Amps	15 Amps

**BLACK:** to Chassis Ground

### CONTROL WIRING FOR WARNING STICKS

**WHITE:** for Simultaneous or Alternating Flash

Group1: Sticks with **WHITE** connected to **RED** will flash together

Group2: Sticks with **WHITE** not connected to **RED** will flash together

\*Group1 will alternate with Group2

**YELLOW:** for Synchronization & Flash Pattern Change (refer to Flash Patterns chart)

Connect **YELLOW** wires of all sticks together for synchronization

\*All sticks must be set at the same pattern

**Note:** Some patterns are not suitable for synchronization.

FP#	FLASH PATTERN	FP#	FLASH PATTERN	FP#	FLASH PATTERN
0	Kit Scan	9	Quint (split)	18	Mega (all)
1	Outside-In Single	10	Mega (split)	19	Ultra (all)
2	Outside-In Ultra	11	Ultra (split)	20	Single-Quad (all)
3	Side-by-Side Single	12	Single-Quad (split)	21	Single H/L (all)
4	Side-by-Side Ultra	13	Single H/L (split)	22	Steady 2 (california)
5	Random	14	Single (all)	23	Steady 4 (all)
6	Single (split)	15	Double (all)	24	Left Chaser
7	Double (split)	16	Quad (all)	25	Right Chaser
8	Quad (split)	17	Quint (all)		

\*(split)=side by side alternating    \*(all)=all LEDs on

Momentarily apply +VDC to **YELLOW** wire:

- Once for next pattern
- Quickly 3 times for reset to FP#0

**Note:** This unit is not factory set at FP#0

The following FP# are not available in 2 Head Sticks:  
FP# 0, 1, 2, 3, 4, 24, 25

## CONTROL WIRING FOR TRAFFIC ARROW STICKS

**ORANGE:** to +VDC for Left Arrow  
**BLUE:** to +VDC for Right Arrow  
**BROWN:** to +VDC for Warning Patterns (Arrow Function wires must be deactivated).

**ORANGE+BLUE:** to +VDC for Center Out

**YELLOW:** for Pattern Change (refer to Flash Patterns chart)

**GREEN:** to +VDC for Low Power (disconnect for High Power)  
 or for end flasher heads on/off (only for models with end flashers)

**WHITE:** only used when connecting with SW610-TA switch (sold separately)

**Note:** The correct side up is facing the front of the stick with wiring coming out the right side.

FP#	ARROW PATTERNS (ORANGE/BLUE)	WARNING PATTERNS (BROWN)	END FLASHER PATTERNS (GREEN)
0	Sweep Single	Random	Random
1	Sweep Double	Outside-In Single	Single (split)
2	Sweep Triple	Outside-In Ultra	Quad (split)
3	Sweep Single End x2	Side-by-Side Single	Mega (split)
4	Solid	Side-by-Side Ultra	Ultra (split)
5	Solid End2	Kit Scan	Single-Quad (split)
6	Solid Chaser	Single (split)	Single (all)
7	Solid Fade	Ultra (split)	Quad (all)
8	Blink Double	Single H/L (split)	Ultra (all)
9	Blink Triple	Single (all)	Single-Quad (all)
10	Blink Solid	Ultra (all)	<b>**In-Sync-Mode</b>

Momentarily apply +VDC to **YELLOW** wire:

- Once for next pattern
- Quickly 3 times for reset to FP#0

**Note:** This unit is not factory set at FP#0

\*(split)=side by side alternating    \*(all)=all LEDs on

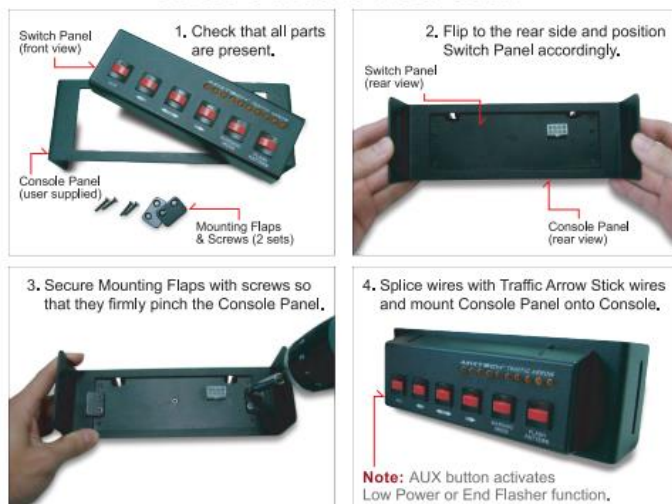
**\*\*In-Sync-Mode:** during warning mode, end flasher heads will sync according to the warning pattern.

**Note:** to select End Flasher Patterns, Arrow and Warning Function wires must be deactivated.

## CONNECTION TO SW610-TA SWITCH PANEL (sold separately)

1. Choose a place to install the Switch Panel.
2. Route Switch Panel **RED** & **BLACK** wires toward vehicle battery.
3. Route Traffic Arrow Stick wires to Switch Panel and splice same color wires together.

### Console Mount Installation



### Screw Mount Installation

